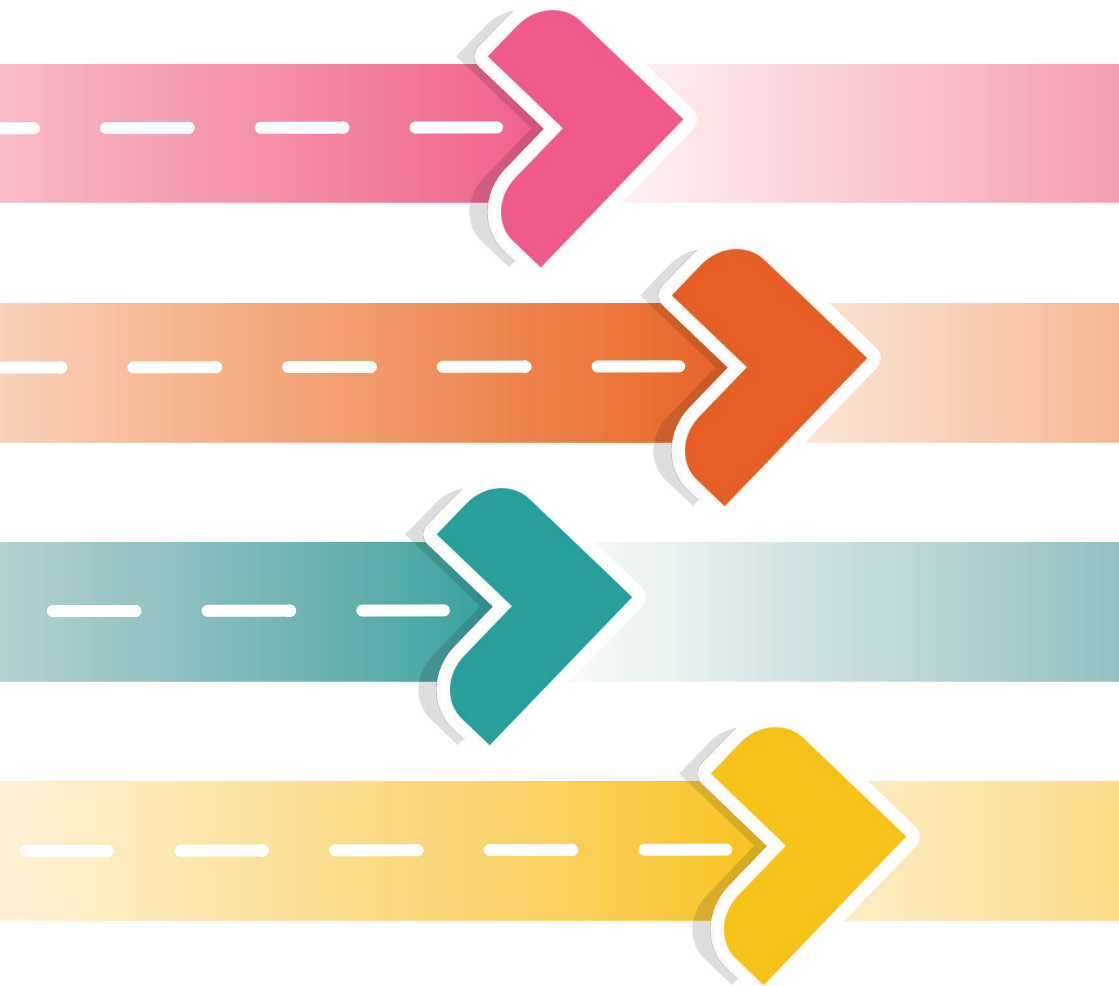


LMI - LABOUR MARKET INFORMATION

# HEALTH & SOCIAL CARE

Bexley, Greenwich, Newham, Enfield, Waltham Forest, Redbridge, Barking, Havering, Bromley





# WHAT IS HEALTH & SOCIAL CARE?

Health and social care careers focus on supporting individuals' physical, emotional, and social well-being. This sector is vital for providing care, promoting independence, and improving quality of life for people at all stages of life.

## KEY CAREER AREAS INCLUDE:



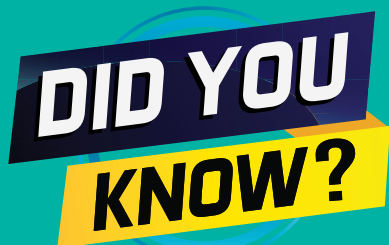
**Social Work & Care Services:** Supporting vulnerable populations, such as the elderly, disabled, or children, through roles in care homes and community programs.



**Community Healthcare:** Providing local support through clinics, home visits, and health centres, focusing on preventative care and rehabilitation.



**Hospital Services:** Roles in major hospitals like Royal London Hospital, including nursing, medical support, and administrative positions.



Health and social care, a Mayoral priority, employed **127,536** in Local London in 2024 (14.2% of jobs), above national (13.6%) and London (10.6%) averages. Health jobs are projected to rise 10% by 2035, while social care may decline by 2%.



## INDUSTRY CHALLENGES

### SKILLS SHORTAGES



There aren't enough nurses, care workers, and social workers, making it harder to provide the care people need.

### E-COMMERCE GROWTH



Rising material costs and inflation impact budgets and timelines.

### FUEL & EMISSIONS



Health and social care could be much more efficient with better use of technology, but many places are still behind in using the latest tools.

### GLOBAL TRADE SHIFTS



Many people working in health and care are getting older, and not enough young people are joining the field to take their place.

With East London's growing population, the Health and Social Care sector needs caring, passionate people to help others. From nursing to mental health support, there are loads of ways to make a difference.

## OPPORTUNITIES & TRENDS



### Big demand for Talent:

There are 4,500+ health and social care jobs in East London, offering stability and career growth.

### Government-Backed Training:

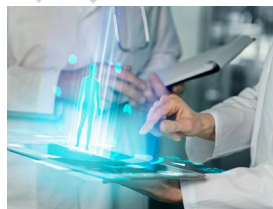
Funding for apprenticeships and degrees in nursing and social care makes it easier than ever to get started.

### Specialised Roles with Impact:

Roles like paramedics and occupational therapists let you work on the frontlines of making a difference in people's lives.

### Technology in Care:

Telemedicine and AI tools are making healthcare delivery smarter, creating opportunities for tech-savvy workers.





# WHAT JOBS CAN I DO?

## ENTRY LEVEL



### HOSPITAL PORTER

They move patients, equipment and medical supplies around a hospital.



### PHARMACY TECHNICIAN

They assist pharmacists in dispensing medications, managing inventory and providing customer service.



### CLINICAL SUPPORT WORKER

They support healthcare teams by preparing patients for procedures and maintaining cleanliness in clinical settings.



## MID LEVEL



### REGISTERED NURSE

They provide patient care, administer medications and coordinate treatment plans in healthcare settings.



### MEDICAL LABORATORY SCIENTIST

They conduct complex tests and analyse, interpret results and ensure quality control in labs.



### PUBLIC HEALTH OFFICER

They work on health promotion and disease prevention initiatives, conducting research and community outreach.



## HIGHER LEVEL



### HEALTHCARE MANAGER

They oversee operations in hospitals or clinics, manage staff, budgets and patient services.



### CLINICAL SCIENTIST

They lead research projects, analyse data and develop new treatments or medical technologies.



### CHIEF MEDICAL OFFICER

They provide leadership in medical care and services, ensuring quality and compliance across healthcare facilities.



# WHERE ARE THE MOST JOBS NEEDED?



**HOSPITALS**



**GP PRACTICES**



**SCHOOLS & EDUCATIONAL SETTINGS**



**CARE HOMES & RESIDENTIAL FACILITIES**



**COMMUNITY HEALTH SERVICES**



**PUBLIC HEALTH ORGANISATIONS**



**MENTAL HEALTH SERVICES**



**REHABILITATION CENTRES & CLINICS**

## LOCAL COMPANIES INCLUDE



**Oxleas**  
NHS Foundation Trust



# HOW DO ESSENTIAL SKILL HELP?



**Accurately understanding patients' and clients' needs and concerns.**



**Clearly and compassionately communicating with patients, clients, and colleagues.**



**Effectively addressing and resolving challenges in patient care and support.**



**Innovating care approaches and solutions to improve patient outcomes.**



**Maintaining a positive and resilient attitude in stressful and challenging situations.**



**Setting and striving to achieve high standards of care.**








**Leading teams and initiatives to enhance patient and client care.**



**Collaborating effectively with colleagues to provide comprehensive care.**

Rate your ability in each skill on a scale of 1 😞 to 5 😊.  
Can you provide any examples of when you have used each skill?

SKILL	RATING (1 - 5)	Examples of when you have used this skill.
<div>LISTENING</div> 	<div><div>12345</div><div><input type="radio"/><input type="radio"/><input type="radio"/><input type="radio"/><input type="radio"/></div></div>	<div></div> <div></div> <div></div>
<div>SPEAKING</div> 	<div><div>12345</div><div><input type="radio"/><input type="radio"/><input type="radio"/><input type="radio"/><input type="radio"/></div></div>	<div></div> <div></div> <div></div>
<div>PROBLEM SOLVING</div> 	<div><div>12345</div><div><input type="radio"/><input type="radio"/><input type="radio"/><input type="radio"/><input type="radio"/></div></div>	<div></div> <div></div> <div></div>
<div>CREATIVITY</div> 	<div><div>12345</div><div><input type="radio"/><input type="radio"/><input type="radio"/><input type="radio"/><input type="radio"/></div></div>	<div></div> <div></div> <div></div>
<div>STAYING POSITIVE</div> 	<div><div>12345</div><div><input type="radio"/><input type="radio"/><input type="radio"/><input type="radio"/><input type="radio"/></div></div>	<div></div> <div></div> <div></div>
<div>AIMING HIGH</div> 	<div><div>12345</div><div><input type="radio"/><input type="radio"/><input type="radio"/><input type="radio"/><input type="radio"/></div></div>	<div></div> <div></div> <div></div>
<div>LEADERSHIP</div> 	<div><div>12345</div><div><input type="radio"/><input type="radio"/><input type="radio"/><input type="radio"/><input type="radio"/></div></div>	<div></div> <div></div> <div></div>
<div>TEAMWORK</div> 	<div><div>12345</div><div><input type="radio"/><input type="radio"/><input type="radio"/><input type="radio"/><input type="radio"/></div></div>	<div></div> <div></div> <div></div>



# WHAT QUALIFICATIONS CAN HELP YOUR CAREER?

## GCSE



## SECONDARY SCHOOL

**Biology:** Essential for understanding life and the human body.

**Chemistry:** Key for medicine, pharmacology, and biochemistry.

**Mathematics:** Critical for data analysis and scientific calculations.

**Physics:** Useful for medical technology and physical sciences.

**English:** Important for communication and understanding medical literature.

**Health and Social Care:** Provides insight into patient care.



## FURTHER EDUCATION

### A-LEVELS

**Biology & Chemistry:** Essential for most healthcare degrees.

**Mathematics & Physics:** Important for technical and research roles.

**Psychology:** Useful for mental health and behavioural sciences.

### VOCATIONAL COURSES

**Health and Social Care:** Practical skills for nursing and social care.

**Applied Science:** Focus on lab work and scientific practice.

### T-LEVELS

**Health:** Prepares for careers like nursing and midwifery.

**Healthcare Science:** Develops core knowledge and skills that are needed for entry to a range of healthcare occupations.

**Science:** Suitable for lab and technical roles.

SCAN OR CLICK  
THE QR CODE  
TO EXPLORE THE  
DIFFERENT  
PATHWAYS



SCAN OR CLICK THE QR CODE TO EXPLORE  
THE AVAILABLE T-LEVEL SUBJECTS





# APPRENTICESHIPS

**Healthcare Assistant Apprenticeship:** Practical experience in patient care, working in hospitals or community settings.

**Pharmacy Technician Apprenticeship:** Learn about medications, prescriptions and assisting pharmacists.

**Dental Nurse Apprenticeship:** Training in dental care, assisting dentists and patient support.

**Nursing Associate Apprenticeship:** Combines study and practical experience, leading to a nursing role.

Click or Scan the QR code to visit the IfATE Occupational Maps to explore the different Apprenticeships available



## HIGHER EDUCATION

### UNDERGRADUATE DEGREE

**Medicine (MBBS):** Become a doctor; requires Biology and Chemistry A-levels.

**Nursing (BSc Nursing):** Specialise in adult, paediatric or mental health nursing.

**Pharmacy (MPharm):** Focus on drug development and patient care.

**Biomedical Sciences (BSc):** Study disease processes and lab techniques.

**Biochemistry (BSc):** Explore chemical processes in living organisms.

**Psychology (BSc):** Understand human behaviour and mental health.

**Public Health (BSc):** Focus on health promotion and disease prevention.

### POSTGRADUATE DEGREE / MASTERS

**Masters in Public Health (MPH):** Advanced study in health policy and epidemiology.

**Masters in Clinical Psychology (MSc):** Specialise in psychological therapy and research.

**Masters in Biomedical Science (MSc):** Advanced study in molecular biology and diagnostics.

**Masters in Nursing (MSc):** Advanced nursing roles and leadership.

### DOCTORATE DEGREE (PhD)

**PhD in Life Sciences, Medicine, or Public Health:** Research-focused careers in academia or industry.

## HEALTH & SOCIAL CARE

# CLASSROOM TO CAREER



How can you make a start on your career during your time in secondary school?

1

### LEARN & EXPLORE

Focus on subjects like Biology, Chemistry, and Health & Social Care. Try free online courses in healthcare, research methods, or public health.

2

### GAIN EXPERIENCE

Volunteer at hospitals, clinics, care homes or community centres. Look for part-time jobs in healthcare settings.

3

### DEVELOP SKILLS

Practice critical thinking, data analysis, and communication. Learn about patient care protocols.

4

### NETWORK & CONNECT

Attend healthcare career fairs or workshops. Join online communities for healthcare professionals and researchers.

5

### PLAN FOR THE FUTURE

Research careers in medicine, nursing, or biomedical research. Explore college programs or apprenticeships in health and science fields.

# MORE INFORMATION

Scan or click on the QR codes to become more informed about the different jobs and education and training options available to you.

## STEP INTO THE NHS

Explore over 350 different roles or take a quiz to find the right role for you.

**SCAN ME** 



## NATIONAL CAREERS SERVICE

Explore over 750 different careers. Find out what a job involves and if it's right for you.

**SCAN ME** 



## BBC BITESIZE

Explore job profiles for tips and advice from young people working in the sector.

**SCAN ME** 



## LMI LONDON

Discover jobs, stories, and opportunities across London's industries.

**SCAN ME** 

